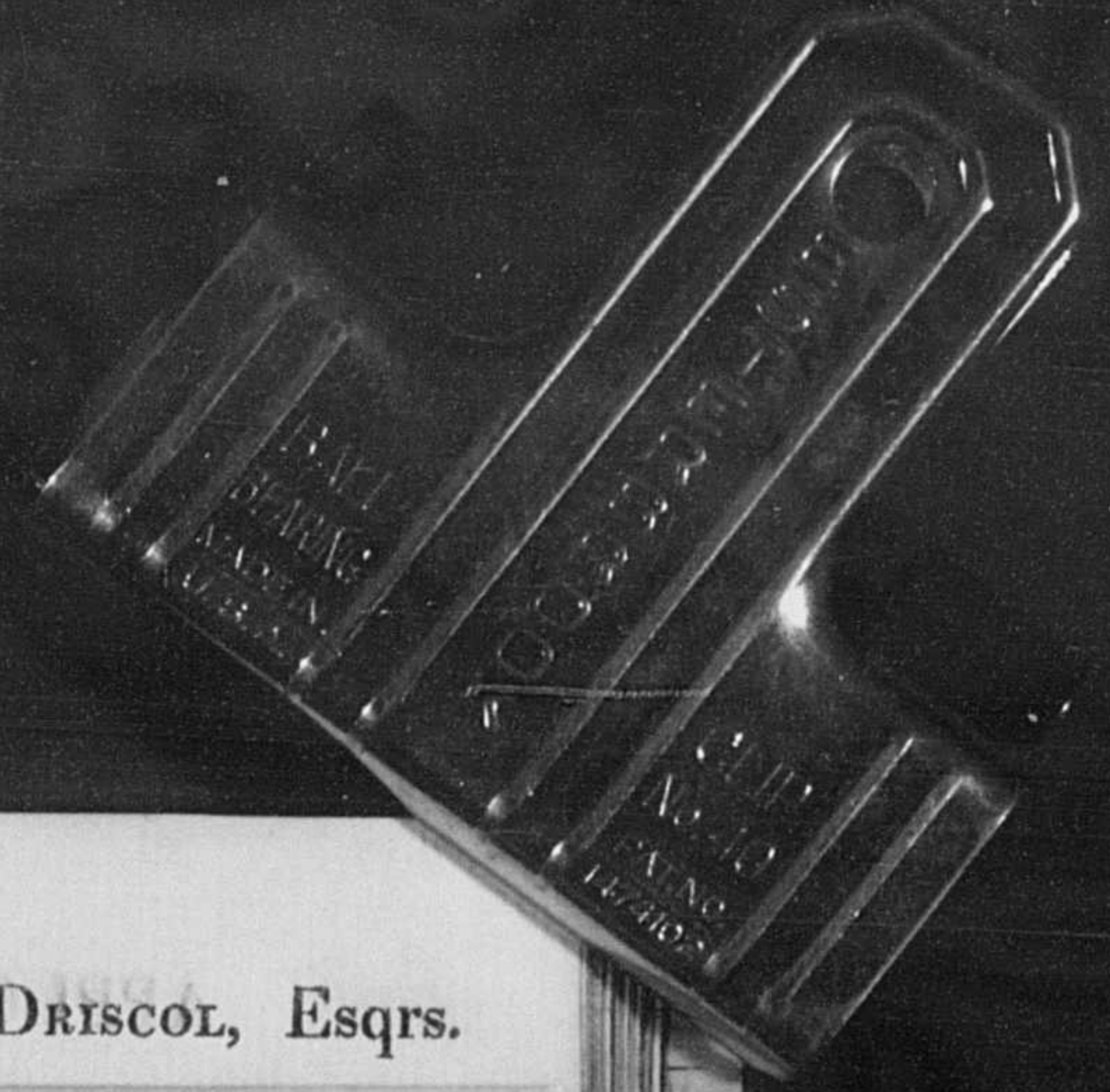


O'DRISCOL, Esqrs.

APPLOTMENT of the Parish of *Kilerothane*, Payable to the Rev. EDWARD J. ALCOCK, NATHANIEL EVANSON & ALEXANDER O'DRISCOL, Esqrs.

sq. A. O'Driscol, Esq. Proportion.

NAME OF LAND.	No.	Occupiers. (47)	No. of Acres.		Value per Acre.		Total Value.	Rev. E. J. Alcock's Proportion.		N. Evanson, Esq. Proportion.		A. O'Driscol, Esq. Proportion.																									
			<i>r</i>	<i>c</i>	<i>sh</i>	<i>Ans</i>		<i>in</i>	<i>d</i>	<i>£</i>	<i>s</i>	<i>d</i>	<i>£</i>	<i>s</i>	<i>d</i>																						
<i>Noyskern</i>	327	<i>Jan^r Donovan</i>	252	1	1	4	1	8	2	1	1	-	1	16	8	1	7	5	-	2	3	68															
							1	10	0				1	5	1					8	1																
							1	9	2				1	1	8					1																	
	328	<i>Widow O'Donovan</i>	6	1	1	4	4	4	6	5	10	-	7	0	-	5	9	-	-	9	4	-															
							2	10	6				2	5	9					1	14	4															
							1	15	2				2	14	2					2	2	2	14	2	2												
<i>Reel</i>	329	<i>Mickl. Carty</i>	13	2	1	10	10	10	10	2	15	-	3	10	1/2	2	10	-	-	2	14	2															
							2	19	6				1	14	1					2	2	13	6	2	40	8	1/2										
							1	15	2				1	10	2					15	2	10	4	6	1/2												
	330	<i>Owen Dawly</i>	13	2	1	10	10	10	10	2	15	-	3	10	1/2	2	10	-	-	4	6	1/2															
							2	15	2				1	10	2					15	2	10	3	1	1/2												
							1	10	6				2	10	6					1	7	1	11	1/2	3	1	1/2										
	331	<i>James Dawly</i>	8	1	2	5	5	-	6	1	17	6	2	7	-	1	11	-	-	3	1	1/2															
							2	10	6				1	15	2					2	10	2	10	4	6	1/2											
							1	15	2				13	2	1					10	10	10	3	10	2	10	4	6	1/2								
	332	<i>Tim Sullivan</i>	13	2	1	10	10	-	10	2	15	-	3	10	1/2	2	10	-	-	4	6	1/2															
							1	10	6				1	10	6					1	10	6	1	10	6	1	10	6	1	10	6	1	10	6	1	10	6
							2	15	2				1	10	2					15	2	1	10	2	15	2	1	10	2	15	2	1	10	2	15	2	
	333	<i>John Dawly</i>	8	1	2	5	5	-	6	1	18	11	6	7	-	1	11	-	-	3	1	1/2															
							2	15	2				1	18	11					6	5	11	1	10	7	1/2											
							5	-	6				1	18	11					6	5	11	1	10	7	1/2											
			55	10	6	48			18	11	6	5	11	1	10	7	1/2			12	6																



£. s. d.

1 12 11 1/4

1 7 5 1/2

2 5 1/4

1 3

1 3

1 3

1 3 1/4

10 5 1/2

2 3 1/2